

Gloria in excelsis Deo

Festmusik zum 1. Weihnachtstag BWV191

Johann Sebastian Bach

1.

8

15

21

28

36

45

52

59

67

3

3

1

Gloria in excelsis Deo

77

85

92

98

104

109

114

119

124

129

134

Detailed description: This image shows a page of musical notation for the Gloria in excelsis Deo. It consists of ten staves of music, each starting with a measure number. The key signature is one sharp (F#), and the time signature is common time (C). The notation includes various rhythmic values, slurs, and trills. A first ending bracket is present above measure 98. Trills are marked with 'tr' above measures 119 and 124. The music is written in a single melodic line on a treble clef.

Gloria in excelsis Deo

139

144

147

150

153

156

160

164

169

173

Gloria in excelsis Deo

2. Post Orationem

tr

tr

4

7

10

13

16

p

19

1

f

23

26

29

32

Gloria in excelsis Deo

35

38

47

50

53

56

59

63

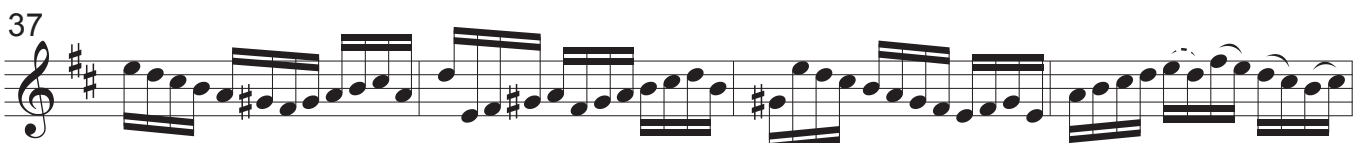
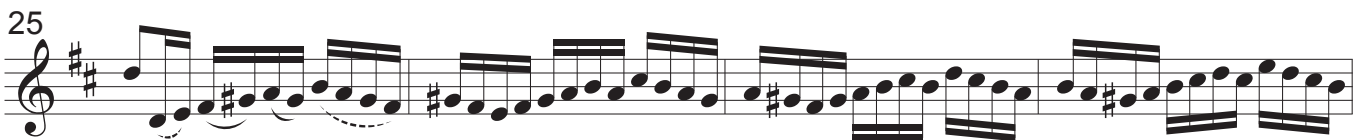
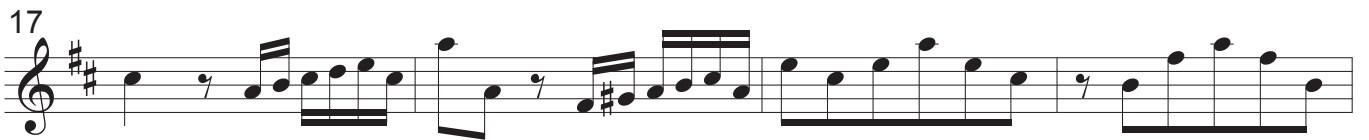
66

69

72

Gloria in excelsis Deo

3.



Gloria in excelsis Deo

48



55



62



68



72



76



83



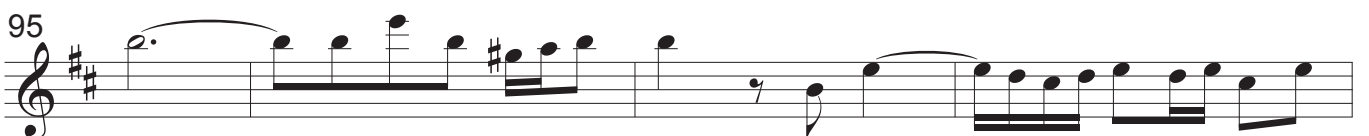
87



91



95



99



Gloria in excelsis Deo

103

107

111

115

119

123

127

131